



Schweizerische Eidgenossenschaft  
Confédération suisse  
Confederazione Svizzera  
Confederaziun svizra

Federal Department of Economic Affairs,  
Education and Research EAER  
**Agroscope**

# Introduction of the Swiss FADN random sample

## First experiences and results

## Daniel Hoop

October 1<sup>st</sup> 2014

[www.agroscope.ch](http://www.agroscope.ch) | good food, healthy environment



# New Swiss FADN System

- Current FADN sample
  - Approx. 30 accounting offices in Switzerland submitting over 3000 accounts closings (biased)
  - Very detailed figures
  - Cost accounting
- New random based sample
  - Approx. 2300 farms from all over Switzerland (2015+) ~ 900 farms in 2014
  - Figures on high aggregation level
  - Financial accounting



transformed and reduced to 2300 farms



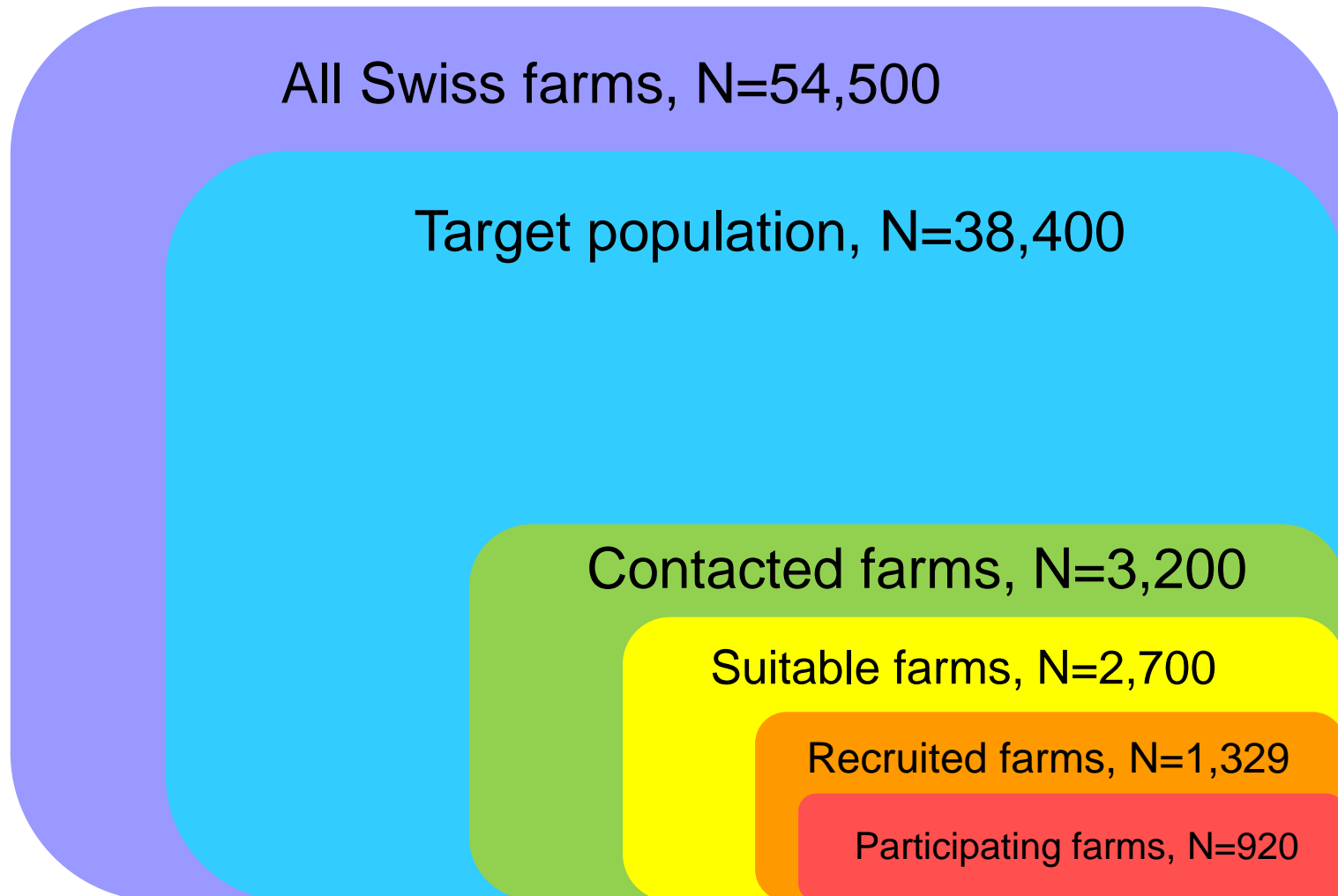
Farm management sample



Income situation sample



# Target population & sample size





# Sampling Design

- Number of farms in the different strata is determined such that income in the strata AND all over Switzerland will be estimated most precisely (compromise). *High number of farms in strata where standard deviation of standard gross margin is high.*

Region Size	Plain		Hill		Mountain	
	<= 20 ha	> 20 ha	<= 20 ha	> 20 ha	<= 20 ha	> 20 ha
Field Crops	12	90	17			
Special Crops	<b>344</b>		45		60	
Dairy Farms	31	82	38	84	33	75
Suckler Cows	14		18		19	
Other Cattle	19		25		23	31
Horse/Sheep/Goat	25		20		28	
Pigs/Poultry	<b>119</b>		76	33		
Comb. Dairy/Crops	25	<b>131</b>	34			
Comb. Suckler C.	48		17			
Comb. Pigs/Poultry	<b>102</b>	<b>188</b>	51	82	17	36
Comb. Other	45	<b>131</b>	21	70	28	



# Determining the random sample

- Balanced sampling determined by the

## **Cube method**

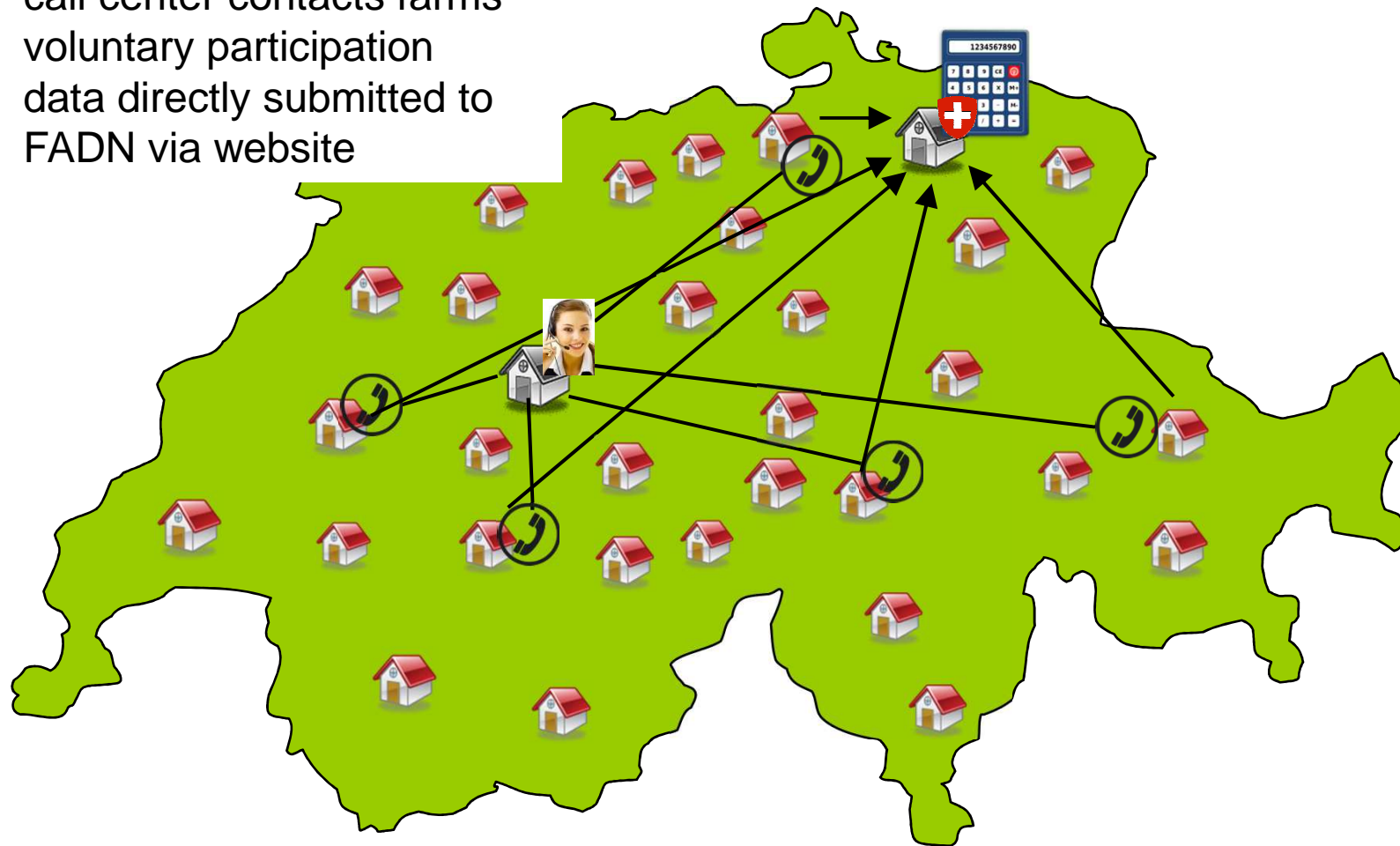
J.C. Deville & Y. Tillé (2002)

- Target figures
  - Farm area
  - Live stock



# «Getting in contact»

- call center contacts farms
- voluntary participation
- data directly submitted to FADN via website





# Horizon 20xx - The Goal



- High response rates
- Small bias
- Most precise estimation of farm income



# Sunset 2014 - Reality 😊



- Varying response rates: Could be higher
- Small bias (only in some strata!)
- Precision of farm income estimation can not be determined





# Recruited farms: Target

20= minimum number of recruited farms in order to be able to estimate response rates

Region Size	Plain		Hill		Mountain		total
	<= 20 ha	> 20 ha	<= 20 ha	> 20 ha	<= 20 ha	> 20 ha	
Field Crops	20	47	20		0		<b>87</b>
Special Crops		99	25		28		<b>152</b>
Dairy Farms	20	43	22	46	20	40	<b>191</b>
Suckler Cows		20	20		20		<b>60</b>
Other Cattle		20	20		20	20	<b>80</b>
Horse/Sheep/Goat		20	20		20		<b>60</b>
Pigs/Poultry		84	56		0		<b>140</b>
Comb. Dairy/Crops	20	69	21		0		<b>110</b>
Comb. Suckler C.		24	20		0		<b>44</b>
Comb. Pigs/Poultry	39	67	34	49	20	21	<b>230</b>
Comb. Other	31	66	20	38	20		<b>175</b>
	<b>689</b>		<b>411</b>		<b>229</b>		<b>1329</b>

- Empirical values from 3 test phases (2010-2012) helped to estimate the needed number of recruited farms in order to achieve the target number of finally participating (delivering) farms.



# Recruited farms: Target - achieved

Region	Plain		Hill		Mountain		total
	<= 20	> 20	<= 20	> 20	<= 20	> 20	
Field Crops	-5	6	-2				-1
Special Crops	8		-1		-11		-4
Dairy Farms	-3	-1	13	2	13	5	29
Suckler Cows	-1		-5		-2		-8
Other Cattle	1		-1		-1	-4	-5
Horse/Sheep/Goat	-4		1		-1		-4
Pigs/Poultry	-11		-2				-13
Comb. Dairy/Crops	-4	-3	2				-5
Comb. Suckler C.	-2		-2				-4
Comb. Pigs/Poultry	-2	-2	2	3	3	6	10
Comb. Other	-1	2	-1	-2	-3		-5
	-22		7		5		-10



# Response Rates

## - Differences between the languages

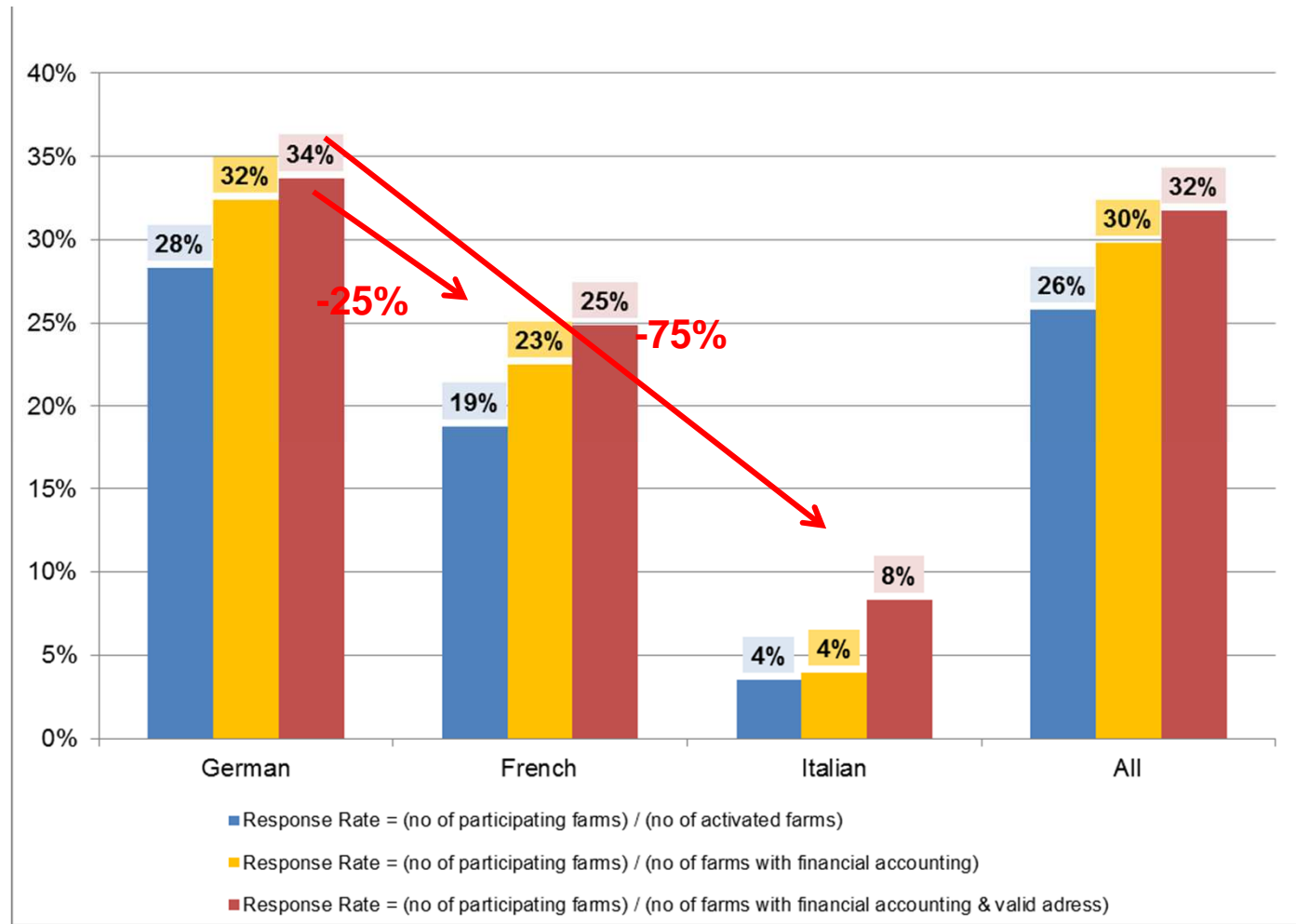
	Total	GER	FR	IT
Activated addresses by call center (%)	100%	100%	100%	100%
Invalid addresses or phone number (%)	14%	13%	17%	11%
Farms without financial accounting (%)	6%	4%	10%	52%
Refusal (%)	41%	44%	31%	21%
Willing to participate (%)	48%	46%	57%	46%
Received accounts closings Base: Willing to participate (%)	67%	74%	44%	18%
Received accounts closings Base: Activated addresses (%)	32%	34%	25%	8%

	Total	GER	FR	IT
Received accounts closings by accounting offices Base: Willing to participate (%)	68%	76%	43%	17%
Received accounts closings by farmers (directly) Base: Willing to participate (%)	59%	63%	49%	20%



# Response Rates

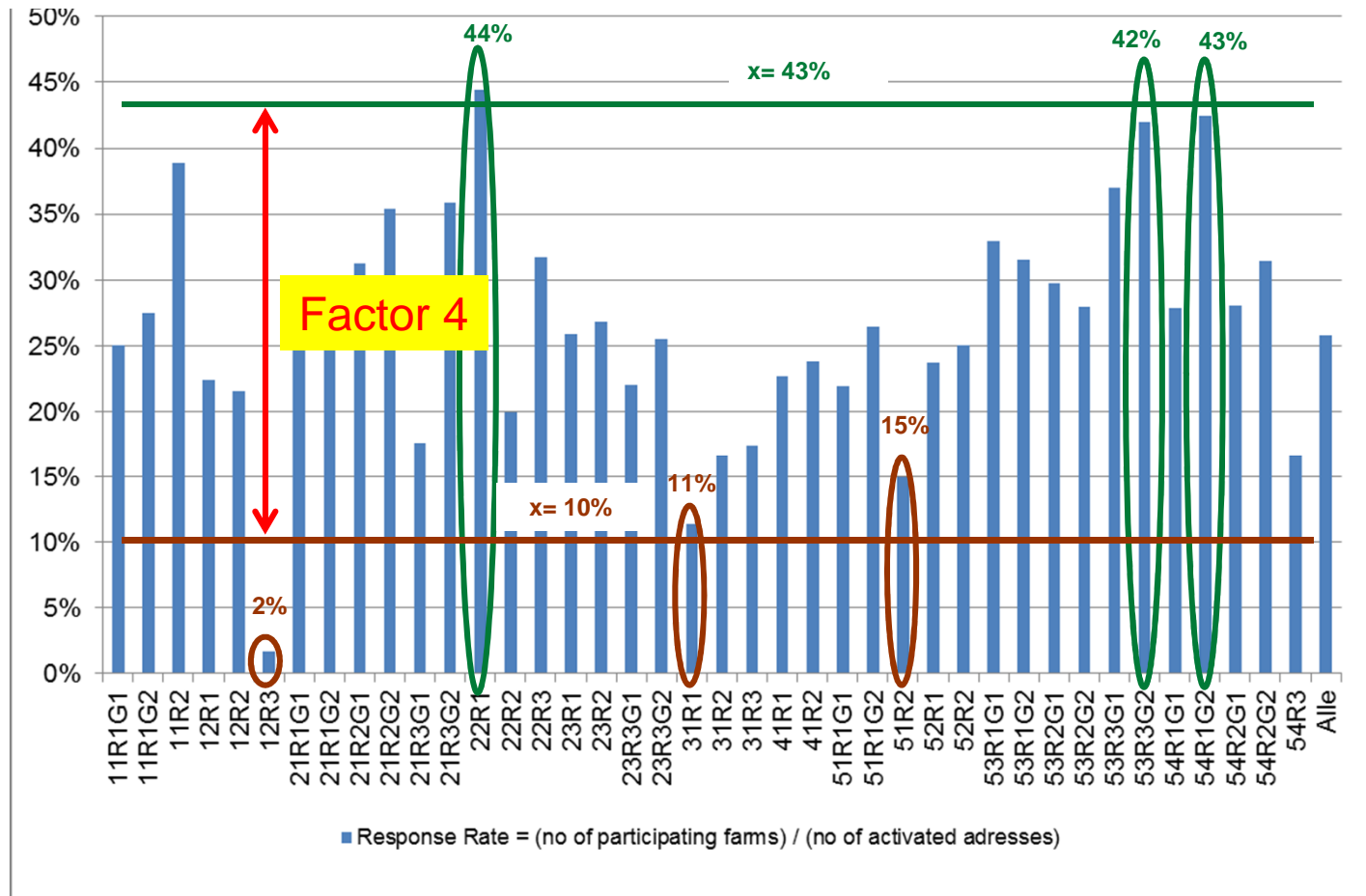
## - Differences between the languages





# Response Rates

## - Differences between strata





# Erosion of the panel

Share of farms from year x that are still in the panel.

Base: Participating farms

Year (x) Activated	Share	
	Special Crops	Dairy Farms
2012	60%	67%
2011	34%	50%
2010	<b>31%</b>	<b>40%</b>

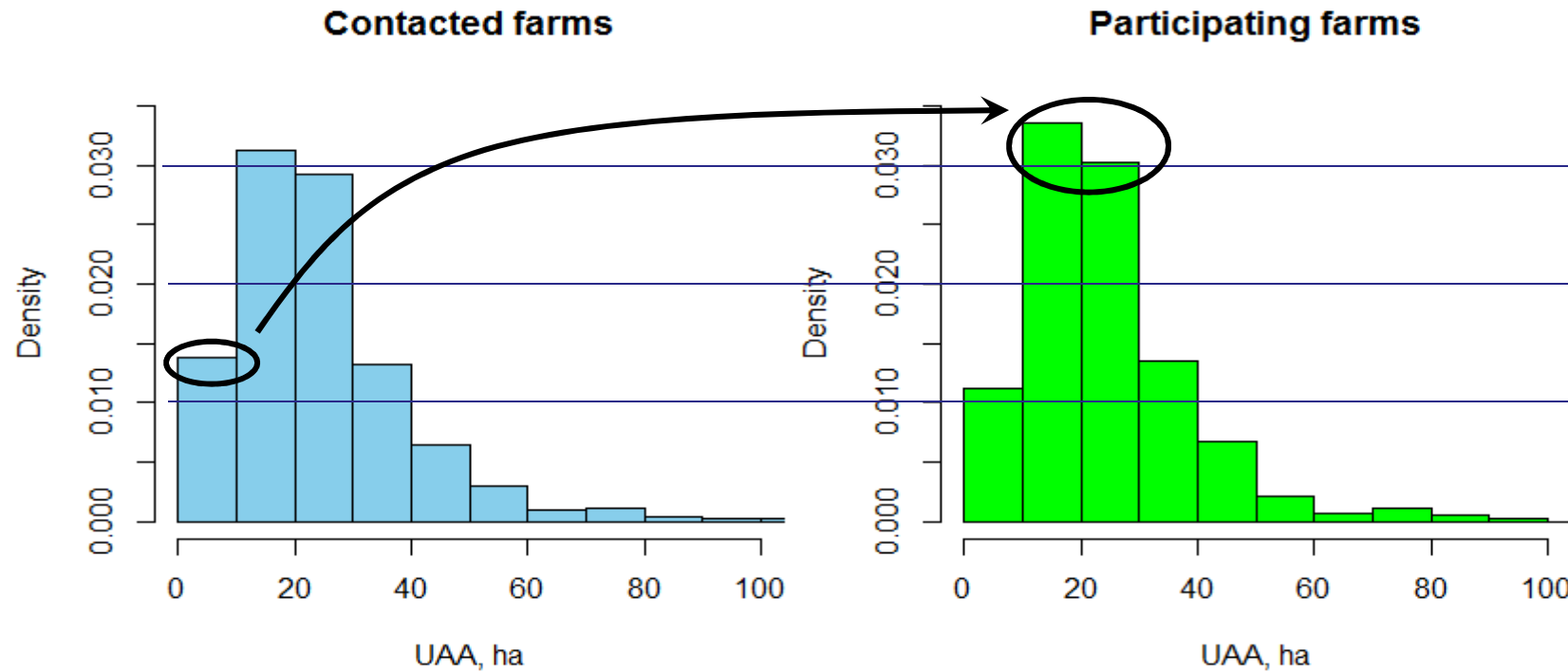
Share of farms from year x that are (still) in the panel.

Base: Activated addresses

Year (x) Activated	Share	
	Special Crops	Dairy Farms
2013	13%	31%
2012	8%	21%
2011	4%	16%
2010	<b>4%</b>	<b>12%</b>

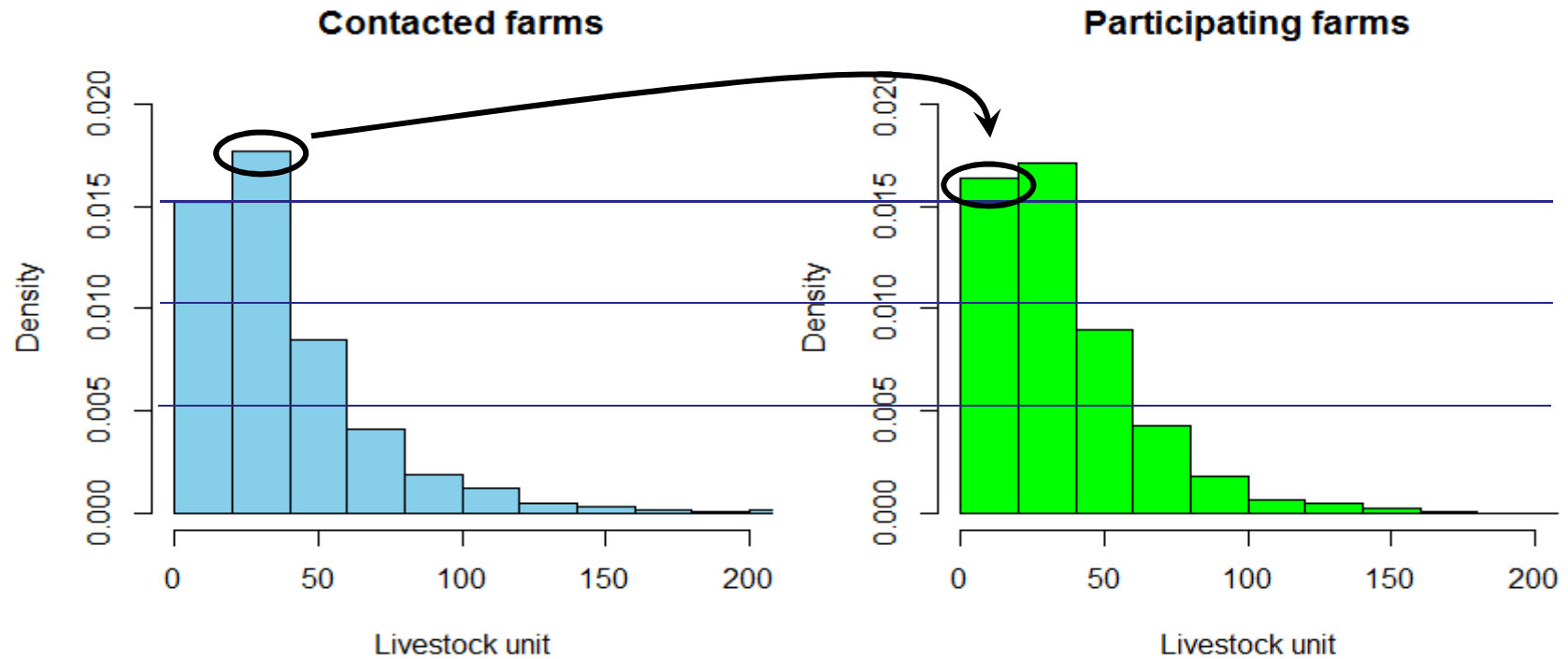


# Sample bias - Influence of farm size (UAA)





# Sample bias - Influence of farm size (LSU)

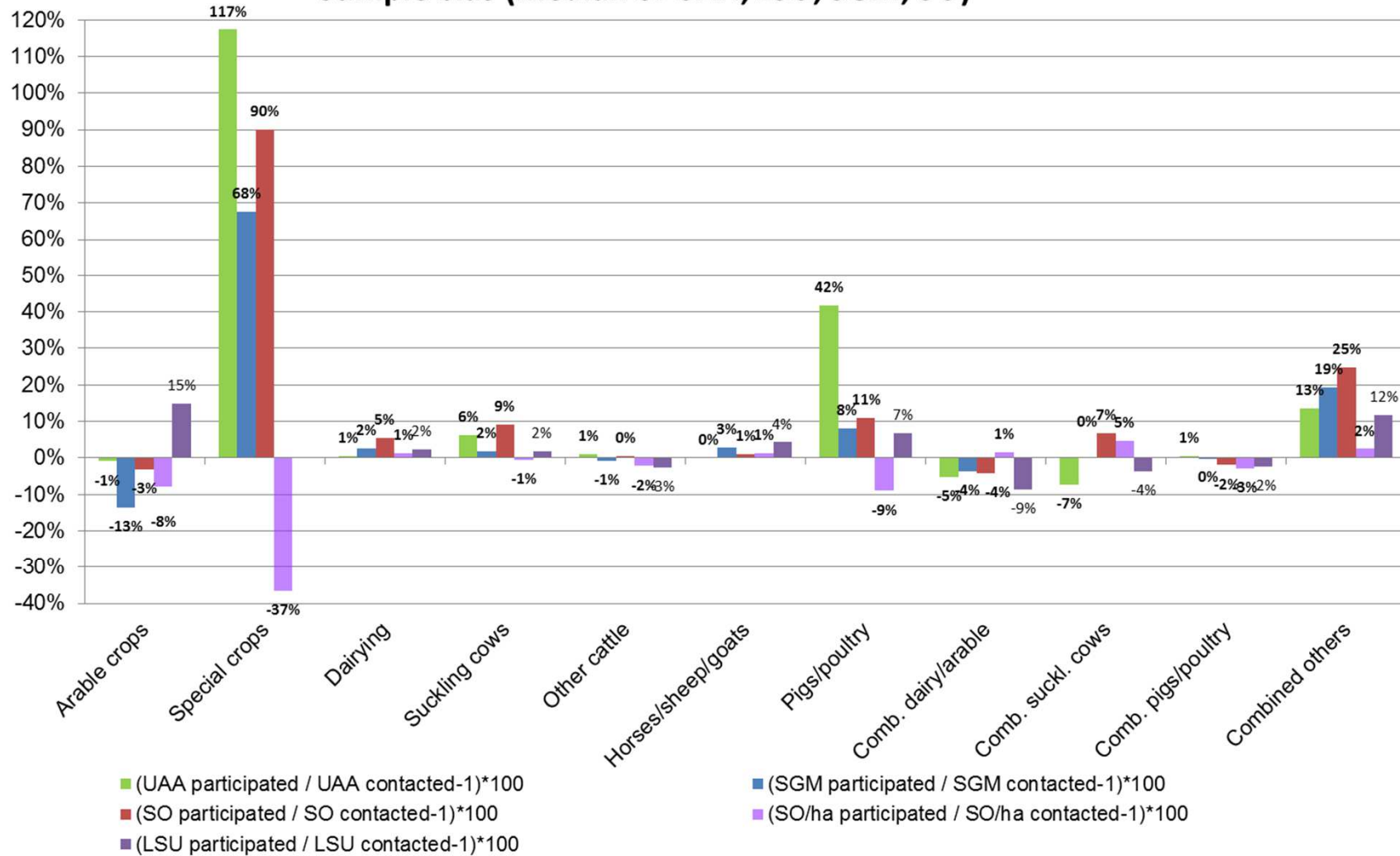






# Sample bias

## Sample bias (median of UAA, LSU, SGM, SO)





# Thank you for your attention



**Agroscope** good food, healthy environment